

# NHS Milton Keynes Immunisation Project

Karen Folwell

Peripatetic General Practice Nurse

# Background

- **Nice Public Health Guidance21**

(Reducing the Differences in the uptake of immunisation –  
[www.nice.org.uk/PH21](http://www.nice.org.uk/PH21))

- **DH Operating Framework -“vital signs”  
Tier 2 – Childhood Immunisation.**

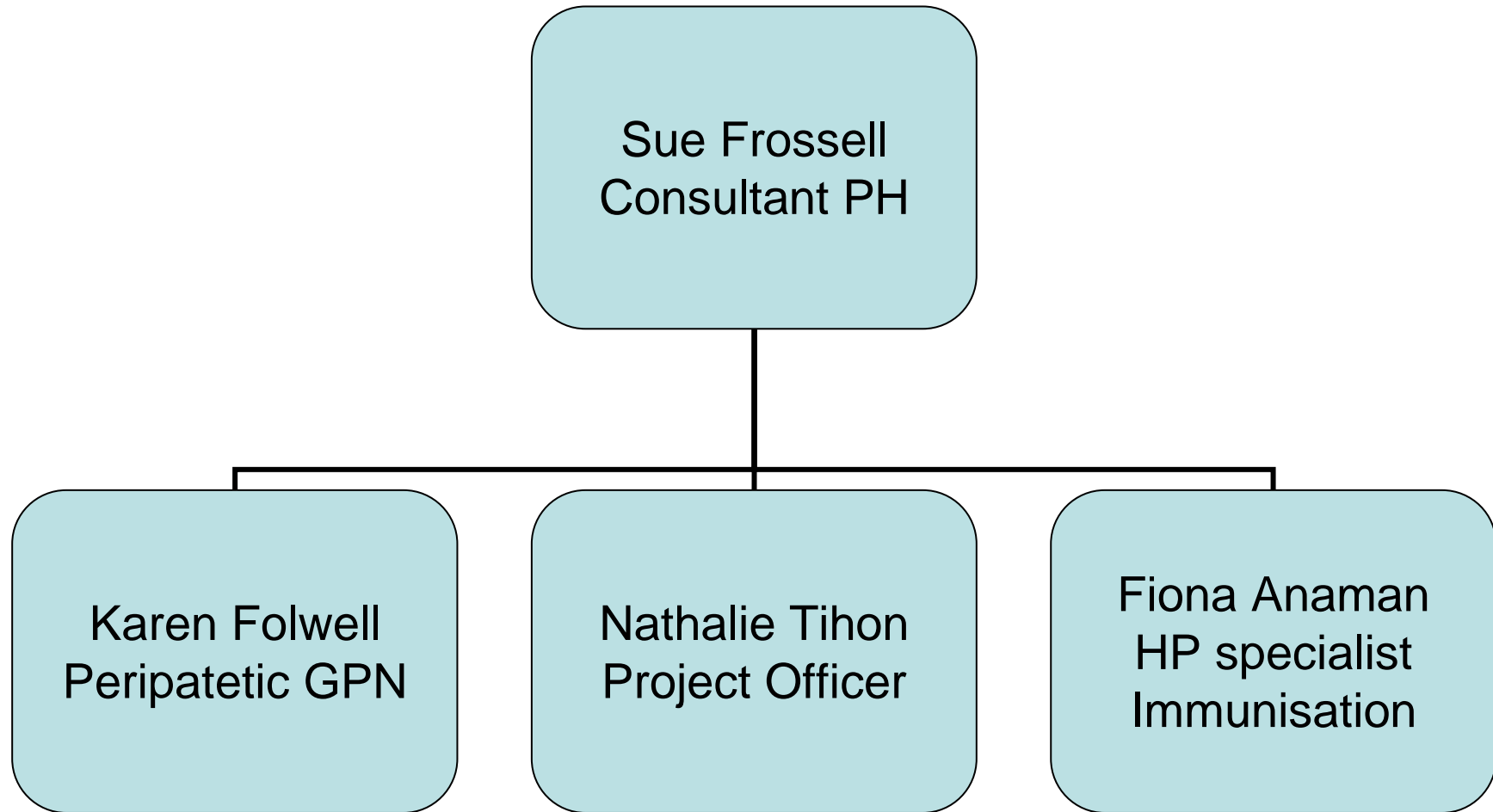
All PCT's cover immunisation in their operational plans for sign off  
by the SHA.

[www.immunisation.nhs.uk/files/vitalsigns\\_2009](http://www.immunisation.nhs.uk/files/vitalsigns_2009) (PDF56KB)

- **NHS South Central –**

Childhood Vaccination Guideline for Primary Care

# The Project Team



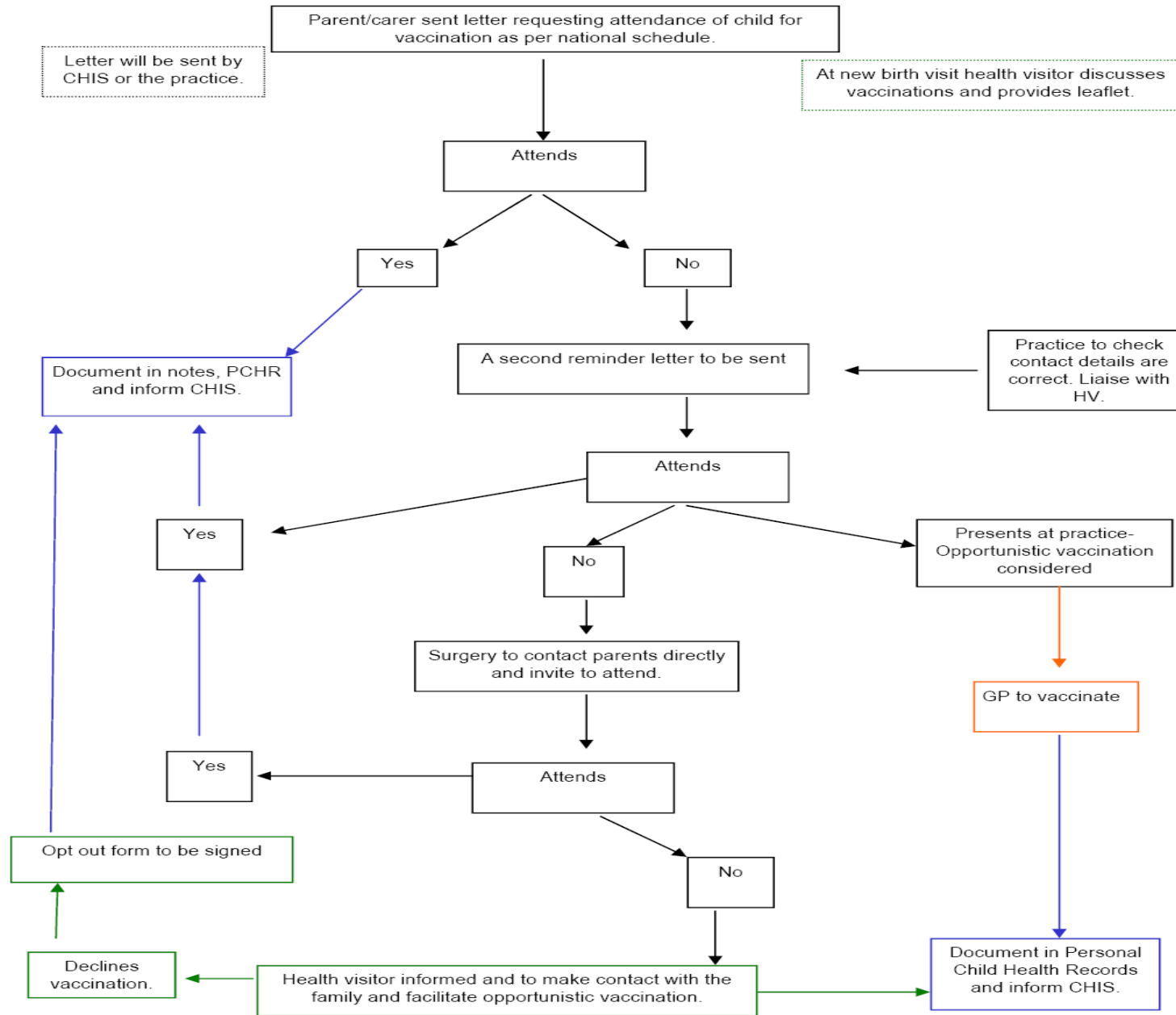
# MK Immunisation Review Group

- Process mapping exercise - to look at current patient pathway.
- Data Cleansing Exercise – to clean up data between General Practices and child health.
- Standardise READ codes
- DNA pathway
- Practice Implementation Plan

# SHA South Central Childhood vaccination Guideline

- Team work between HV, GPN and GP is vital if children are to be protected against vaccine preventable disease.
- A set of 24 standards to achieve this – to be circulated in the practice implementation plan.
- Childhood Policy Guideline

## Childhood Vaccination Policy Guideline



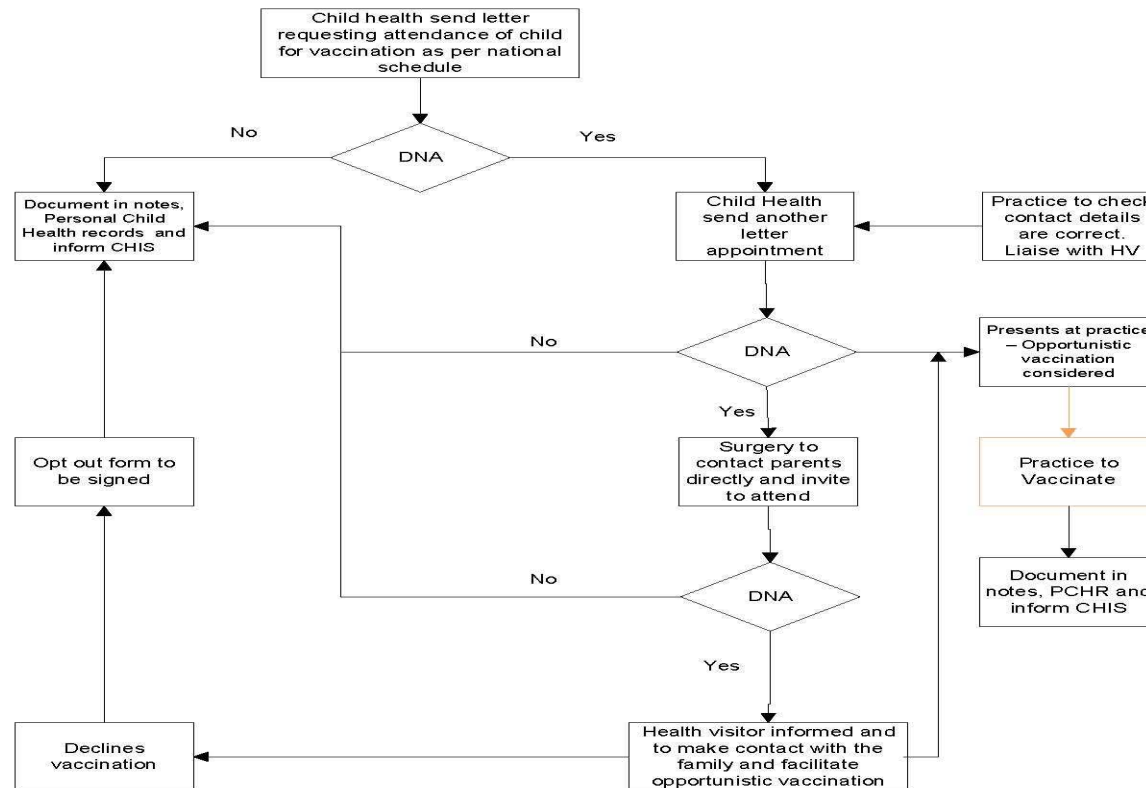
# Data Cleansing Exercise

Total of 28 surgeries

- **8 still waiting for data from the Surgeries**
- **2 data received recently, analysis still to be done**
- **18 surgeries reviewed**
- **28,152 patients reviewed**
- **73% data matching**
- 9% Child Health database to be updated
- 9% Surgeries database to be updated
- 8% Child Health need to review

All the reviewed surgeries have been contacted and given a list with patient's immunisation data to update their system.

## Childhood Vaccination DNA Pathway



### Additional Information:

Key to return codes for Children who have failed to attend for their Scheduled Immunisations.

Code 2 = DNA with reason

Code 3 = DNA without a reason.

Children who have failed to attend for their Scheduled Immunisations for the **second** time as a code 3 DNA, will not be automatically scheduled for a further appointment by the Child Health recall system.

Child Health will produce a monthly report, outlining those children that have been removed from the recall list following 2 DNA's as a code 3.

A report will be sent to the GP practice to ensure that the surgery is made aware that children in the practice population are no longer on the child health recall list, so that appropriate action can be taken by the practice.

Practice can opt for a child to receive a further scheduled appointment by letting their 'Information Officer' know so that they can remove the 'Fail to attend' block on the child.

Figure 2: Percentage of children immunised against MMR at 24 months, by Primary Care Trust, 2008-09

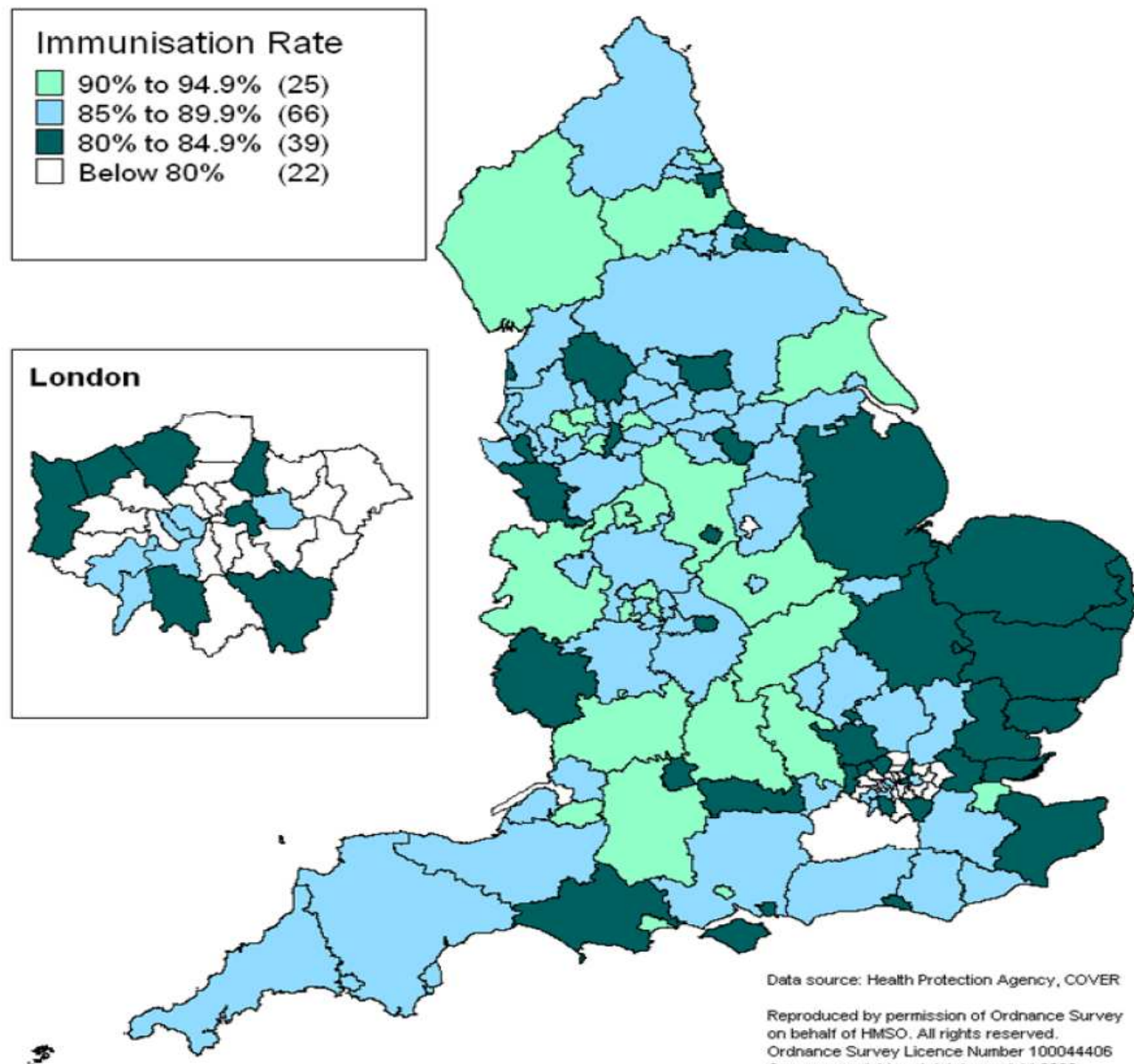


Table 11: Percentage of children immunised by their 5th birthday, by Strategic Health Authority 2008-09

		Percentage immunised by their 5th birthday					
		Diphtheria Tetanus, Polio	Hib	Diphtheria Tetanus, Polio, Pertussis	MMR		
Number of children aged 5 (thousands) (=100%)		Primary	Primary	Booster	first dose	first and second dose	
England	598.8	93	91	80	89	78	
Q30	North East	27.0	96	96	88	93	85
Q31	North West	77.5	95	94	85	93	83
Q32	Yorkshire and the Humber	59.5	95	94	83	92	82
Q33	East Midlands	46.2	95	95	87	92	84
Q34	West Midlands	63.7	96	94	87	91	82
Q35	East of England	67.5	94	93	82	87	78
Q36	London <sup>(1)</sup>	105.6	83	77	58	81	63
Q37	South East Coast	49.9	92	92	82	87	76
Q38	South Central	48.6	93	93	84	90	79
Q39	South West	53.4	96	95	87	92	83

<sup>(1)</sup> In 2008-09 2 Trusts in London were not able to provide Hib figures for the 5-year cohort

Table 11a: Percentage of children immunised by their 5th birthday, by Primary Care Trust 2008-09

		Percentage immunised by their 5th birthday					
		Diphtheria Tetanus, Polio	Hib	Diphtheria Tetanus, Polio, Pertussis	MMR		
		Primary	Primary	Booster	first dose	first and second dose	
Number of children aged 5 (thousands) (=100%)							
Q38	South Central	48.6	93	93	84	90	79
	5QG Berkshire East PCT	5.2	93	91	75	89	71
	5QF Berkshire West PCT	5.9	86	86	77	83	70
	5QD Buckinghamshire PCT	5.8	97	97	88	92	83
	5QC Hampshire PCT	14.8	94	93	87	90	83
	5QT Isle of Wight Healthcare PCT	1.3	95	93	82	89	77
	5CQ Milton Keynes PCT	3.6	94	92	82	90	77
	5QE Oxfordshire PCT	7.4	96	95	89	94	84
	5FE Portsmouth City Teaching PCT	2.1	94	94	81	91	78
	5L1 Southampton City PCT	2.6	92	90	86	91	83

# MMR Catch Up Campaign

- LES for MMR April 2010 to March 2011
- Target Children aged 13/12 to 18 years
- Peripatetic Practice Nurse Team – The solution to your nurse capacity problems in general practice.
- Email - Peripatetic Practice Nurse Booking (5CQ) Milton Keynes PCT